

Acute

LA3000E/B series logic analyzer

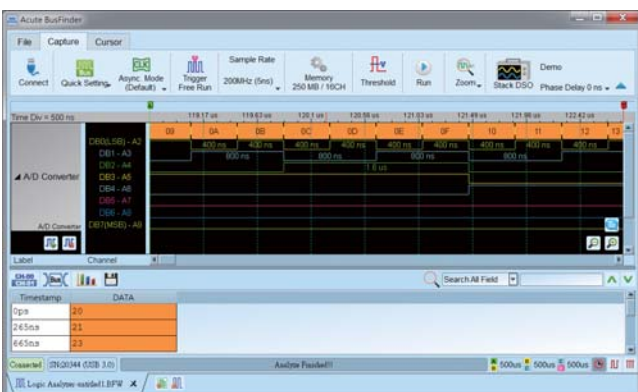


270 x 175 x 55 (mm³)

- PC-based
- 68 / 136 channels
- USB 3.0 interface, 12V power adaptor
- 4GHz Timing Analysis / 250MHz State Analysis
- 32Gb RAM
- Active Probe
- Logic, State, Protocol triggers
- Stackable with a DSO to form an MSO
- Bus Triggers I : BiSS-C, CAN2.0, DALI, I²C, I²S, LIN2.2, PWM, SPI, UART, USB PD3.0, ...
- Bus Triggers II : eMMC5.1, eSPI, MIPI SPMI 2.0, NAND Flash, SD3.0, Serial Flash, SVID
- Protocol Analysis I : I²C, SPI, UART, USB PD3.0
- Protocol Analysis II : CAN2.0, BiSS-C, DALI, eSPI, I²S, LIN2.2, MDIO, PMBus, PWM, SD3.0, SVID, ...
- Bus Decode : CAN2.0, eMMC5.1, I²C, Profibus, SD3.0, SPI, SVID, UART, ...(80+ decodes)

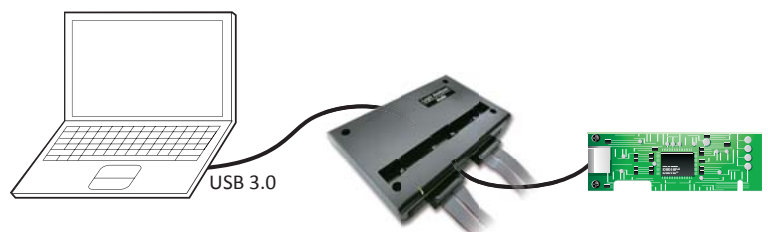
Model	Channel	Bus Triggers	Protocol Analysis	Cascade for more channels
LA3068E	68	I	I	-
LA3136E	136	I	I	YES
LA3068B	68	I, II	I, II	-
LA3136B	136	I, II	I, II	YES

Software Window



System Requirements

- USB 3.0 port
- Win 7, Win 8, Win 10 (64 bit)
- PC RAM 16GB (recommended) or 8GB at least



Acute

PC-based T&M Instruments

Acute Technology Inc.

Tel: +886-2-2999-3275 E-mail: service@acute.com.tw <http://www.acute.com.tw>



LA3000E/B series

Model		LA3068E	LA3136E	LA3068B	LA3136B
Power	Power Source	12V Power adapter			
	Static Power Consumption	18W	30W	18W	30W
	Max Power Consumption	45W	75W	45W	75W
Hardware Interface		USB 3.0			
Timing Analysis (Asynchronous, Max. Sample Rate)		4GHz			
State Clock Rate (Synchronous, External Clock)		250MHz			
Storage		Conventional Timing, Transitional Timing			
Channels (Data / Clock)		64 / 4	128 / 8	64/4	128/8
Total Sample Memory		32Gb			
Available channels vs. Memory per channel	Timing Analysis	Available channels / Memory per channel			
	4GHz	16 / 2Gb			
	2.4 / 2GHz	32 / 1Gb			
	1GHz	64 / 500Mb			
500 / 250 / 200MHz		64 / 500Mb	128 / 250Mb	64 / 500Mb	128 / 250Mb
Resolution		250 ps			
Channels		64	128	64	128
Pre / Post Trigger		Yes			
Pass Count		Yes (1 ~ 1000000 times)			
Event Types		Word, Channel, Transition, Glitch, Width, Timeout			
Trigger	Bus Triggers I	BiSS-C, CAN2.0, DALI, HID over I ² C, I ² C, I ² S, LIN2.2, MDIO, Modbus, SMBus, SPI, PMBus, Profibus, PWM, UART, USB1.1, USB PD3.0, RS232			
	Bus Triggers II	eMMC5.1, eSPI, MIPI SPMI 2.0, NAND Flash, SD3.0, Serial Flash, SVID			
	Input (for Stack)	TTL 3.3V			
	Output Port (for Stack)	TTL 3.3V			
Ref. Clock Input		10MHz, Vpp=3.3 to 5V			
Threshold	Range	-0.5V~4.5V			
	Resolution	0.1V			
	Accuracy	+/- 20mV			
Input Voltage	Maximum	+/- 15V			
	Sensitivity	~300mV			
Impedance		1M 5pF			
Temperature	Operating / Storage	5°C~45°C (41°F~113°F)/-10°C~65°C (14°F~149°F)			
Channel to channel skew		< 500 ps			
Protocol Analysis	I	I ² C, SPI, UART, USB PD3.0			
	II	BiSS-C, CAN2.0, DALI, eSPI, HID over I ² C, I ² S, LIN2.2, MIPI SPMI 2.0, MDIO, Modbus, PMBus, Profibus, PWM, RS232, SD3.0, SMBus, SVID, USB1.1			
Zoom In / Out		Yes			
Languages		English / Traditional Chinese / Simplified Chinese			
Waveform Height		Adjustable			
Zoom / Report Window		Yes			
Quick Cursor-positioning		Yes			
Import Label(s)		Yes			
Quick Bus Decode Setup		Yes			
Trigger / Auxiliary cursors		1/25			
Software Features	Bus Decode	1-Wire, 3-Wire, 7-Segment, A/D Mux Flash, AccMeter, ADC, APML, BiSS-C, BSD, CAN 2.0B, Close Caption, DALI, DMX512, DP Aux, EDID, eMMC 5.1/MMC, eSPI, FlexRay, HDMI CEC, HD Audio, HDLC, HDQ, HID over I ² C, I ² C, I ² C EEPROM, I ² S, I80, IDE, ITU656, IrDA, JTAG, LCD1602, LIN2.2, Line Encoding, Line Decoding, Lissajous, LPC, LPT, M-Bus, Math, MDIO, MHL CBus, Microwire, MII, MIPI DSI, MIPI RFFE, MIPI SPMI 2.0, Modbus, NAND Flash, NEC IR, PECL, PMBus, Profibus, PS/2, PWM, QI, RGB Interface, RC-5, RC-6, SD3.0 (SDIO), Serial Flash, Serial IRQ, SGPIO, Smart Card, SMBus, SMI, S/PDIF, SPI, SPI-NAND, SSI, ST7669, SWD, SWP, SVI2, SVID, UART, UNI/O, USB 1.1, USB PD 2.0, Wiegand, ...			
	Line Decoding	Biphase Mark, Differential-Manchester, Manchester (Thomas, IEEE802.3), Miller, Modified Miller, NRZI, ...			
	Line Encoding	AMI (Standard, B8ZS, HDB3), Biphase Mark, CMI, Differential-Manchester, Manchester (Thomas, IEEE802.4), MLT-3, Miller, Modified Miller, NRZI, Pseudoternary, ...			
	Dimension	L x W x H (mm ³)	270 x 175 x 55 (mm ³)		
Weight	Device / Accessories	800g / 1500g			
Lead Cable (LA-Pod / Flying lead cable)		2 / 8	4 / 16	2 / 8	4 / 16
Grippers		80	160	80	160



Acute Technology Inc.

PC-based T&M Instruments Tel: +886-2-2999-3275 E-mail: service@acute.com.tw http://www.acute.com.tw